

AI Based Real-Time Crop Image Analytics for Crop Insurance (PMFBY)

Mr.M.Mohanasundharam*, Rithika N**, Varshini S***,
Varshini M****, Vidhya A S*****

*(CSE, Hindusthan College of Eng & Tech, and Coimbatore
Email:mohanasundharam.cse@hicet.ac.in)

** (CSE, Hindusthan College of Eng & Tech, and Coimbatore
Email:rithurithi68@gmail.com)

*** (CSE, Hindusthan College of Eng & Tech, and Coimbatore
Email:varshh10singaramuthu@gmail.com)

**** (CSE, Hindusthan College of Eng & Tech, and Coimbatore
Email:varshu12005@gmail.com)

***** (CSE, Hindusthan College of Eng & Tech, and Coimbatore
Email:vidhyaasivadurai05@gmail.com)

Abstract:

Agriculture plays a crucial role in India's economy and supports the livelihood of millions of farmers. Crop insurance schemes such as the Pradhan Mantri Fasal Bima Yojana (PMFBY) are introduced to protect farmers from financial losses caused by natural disasters, pests, diseases, and climate variations. However, the traditional crop monitoring and loss assessment processes depend heavily on manual field inspections by agricultural officials, which often leads to delays, inconsistency, and lack of transparency in insurance claim settlements.

To address these challenges, this project proposes an AI-based real-time crop image analytics system under the CROPIC (Collection of Real-Time Observations & Photos of Crops) initiative. The system allows farmers and field officials to capture geo-tagged crop images using a mobile application. These images are uploaded to a cloud platform where artificial intelligence and deep learning models analyze crop health, identify crop types, determine crop growth stages, and detect damages such as pest attacks, flooding, or drought stress.

A web-based dashboard provides authorities with real-time monitoring of crop conditions through map-based visualization and automated alerts. The integration of AI, mobile technology, and cloud computing improves the efficiency, accuracy, and transparency of crop monitoring and insurance claim processing. This system ultimately aims to build farmer trust in crop insurance programs while supporting technology-driven agricultural monitoring.

Keywords — Artificial Intelligence, Crop Monitoring, Crop Insurance, Image Analytics, Precision Agriculture, Deep Learning, Smart Agriculture

INTRODUCTION

Agriculture plays a crucial role in the economic development of India and supports the livelihood of millions of farmers. Crop production is highly dependent on environmental conditions such as **rainfall, temperature, soil quality, and climate changes**. Natural disasters like **floods, droughts,**

pest attacks, and plant diseases often cause significant crop damage, leading to financial losses for farmers.

To protect farmers from such losses, the Government of India introduced the Pradhan Mantri Fasal Bima Yojana (PMFBY). This scheme provides **financial protection and insurance coverage** to farmers when crops fail due to natural

calamities. However, the current crop monitoring and damage assessment process mainly depends on **manual field inspections by agricultural officers**, which is time-consuming and sometimes inconsistent.

In the traditional system, officials must visit farms to observe crop conditions and prepare reports for insurance claim processing. Because of this manual approach, there may be **delays in data collection, lack of transparency, and difficulty in monitoring crops across large regions**. These limitations often slow down the insurance claim settlement process and create challenges for both farmers and authorities.

With the advancement of technologies such as **Artificial Intelligence (AI), Machine Learning (ML), mobile applications, and cloud computing**, it is possible to improve crop monitoring systems. The **CROPIC initiative (Collection of Real-Time Observations & Photos of Crops)** aims to use mobile photography and AI to analyze crop conditions in real time.

The proposed **AI-based real-time crop image analytics system** allows farmers and field officers to capture **geo-tagged crop images** using a mobile application. These images are uploaded to a cloud platform where AI models analyze crop health, identify crop growth stages, and detect damages such as **pest attacks, flooding, or water stress**. The analyzed information is displayed through a **web dashboard**, allowing authorities to monitor crop conditions and process insurance claims more efficiently.

Overall, this system improves **accuracy, transparency, and speed in crop damage assessment**, helping to strengthen crop insurance programs and support farmers more effectively.

Existing System

In the **existing crop monitoring system**, **agricultural officers** conduct **physical field visits** to collect crop information and evaluate **crop conditions**. Farmers report **crop damages** to local authorities, after which officials inspect the fields and prepare **reports manually**. These reports are used to determine the **extent of crop loss** and process **insurance claims**.

Most of the **data collection** in this system is **manual and paper-based**. Officers must **travel to different locations** to observe crop conditions, which requires **significant time and resources**. The process also depends heavily on **human judgement**, which can sometimes lead to **inconsistencies or bias in damage assessment**.

Another limitation of the **existing system** is the **lack of real-time monitoring**. Once the **inspection process** is completed, the collected data must be processed through **administrative channels** before **insurance claims are approved**. This leads to **delays in compensation** for farmers who have already suffered **financial losses**.

Because of these limitations, the **traditional crop monitoring system** is **inefficient** and lacks **transparency**. Farmers often face **uncertainty regarding the status of their insurance claims**.

Analysis of Existing Systems

The current crop monitoring and insurance claim system has several operational challenges. One of the major issues is the heavy reliance on manual data collection through physical field inspections. Since agricultural officers must visit multiple farms across large geographical areas, the process becomes slow and resource-intensive.

Another challenge is the lack of real-time data availability. Crop conditions may change rapidly due to weather events, pest outbreaks, or irrigation issues. However, manual inspection methods cannot provide immediate updates on crop conditions. This delay affects the accuracy of damage assessment and insurance claim evaluation.

Human bias and inconsistency are also possible in manual crop damage assessments. Different officers may evaluate crop conditions differently based on their observations. This lack of standardization can create disputes between farmers and insurance authorities.

Additionally, traditional systems lack digital infrastructure for data management and monitoring. Without proper technological integration, it

becomes difficult for authorities to analyze crop data efficiently and track agricultural conditions across large regions.

Key Technological Components and How We Connect Them

1. Frontend (User Interface)

The frontend of the system provides a user-friendly mobile interface for farmers and field officials to capture and upload crop images. Through the mobile application, users can take real-time photos of crops, select the crop type or growth stage, and upload the images to the server.

The application is designed with a simple interface so that farmers can easily use it with basic smartphone knowledge. Each captured image is automatically attached with GPS location information (Geo-tagging) to identify the exact crop field location.

The uploaded images are then sent to the backend server through APIs, where they are processed and analyzed by the AI/ML system. This frontend component ensures easy data collection, accurate image capture, and smooth communication between users and the system.

2. Backend (Application Layer)

The backend of the system manages the core processing and data handling of the application. It receives crop images and information from the mobile application and processes them through the AI/ML analysis system.

The backend is responsible for image validation, data storage, and communication between different system components. It also connects the mobile application, cloud server, and web dashboard, ensuring smooth data flow within the system.

After processing the uploaded images, the backend sends the results to the database and dashboard, where authorities can monitor crop health and damage reports. This layer plays an important role

in maintaining system functionality, security, and efficient data processing.

3. Database Management

The database is used to store and manage all the crop-related data collected from the system. It stores information such as uploaded crop images, farmer details, crop type, geo-location data, and analysis results generated by the AI models.

The database ensures secure storage and quick retrieval of information whenever required. It also maintains historical records of crop conditions, which can help authorities analyze crop trends and damage patterns.

By maintaining a centralized data storage system, the database supports efficient data management, monitoring, and reporting for the crop insurance process.

4. AI / ML Image Analysis System

The AI / ML Image Analysis System is the core component of the proposed solution. It uses Artificial Intelligence and Machine Learning algorithms to analyze the crop images uploaded through the mobile application.

The system processes the images using deep learning models to identify the crop type, crop growth stage, and crop health condition. It can also detect crop damages such as pest attacks, flooding, water stress, or plant diseases.

By automatically analyzing the images, the AI system provides accurate and fast crop condition assessment. This helps authorities perform efficient crop monitoring and insurance claim evaluation without relying completely on manual field inspections.

5. Cloud Infrastructure

The cloud infrastructure is used to store and process the crop images and related data collected from the mobile application. It provides a scalable and

secure platform for handling large amounts of agricultural data.

When farmers upload images through the mobile application, they are stored in the cloud server, where the AI/ML models analyze the crop conditions. The cloud also supports data storage, processing, and system connectivity between the mobile app, backend, and web dashboard.

Using cloud technology ensures reliable system performance, data security, and easy access to information, allowing authorities to monitor crop conditions efficiently.

6. Web Dashboard

The web dashboard provides a centralized platform for government authorities and administrators to monitor crop conditions. It displays the analyzed crop data, damage reports, and crop health information collected from the system.

Through the dashboard, authorities can view real-time updates, track crop conditions across different locations, and receive alerts about crop damages. The dashboard may also include map-based visualization to identify affected areas quickly.

This component helps in efficient monitoring, decision-making, and faster insurance claim processing by providing clear and organized crop information.

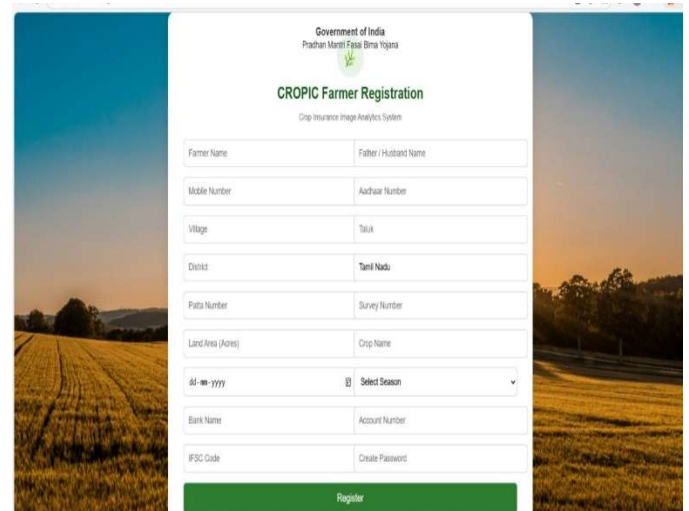
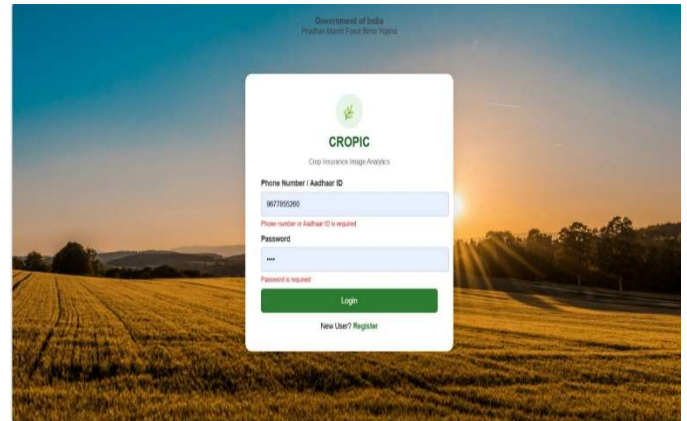
7. System Integration & Workflow

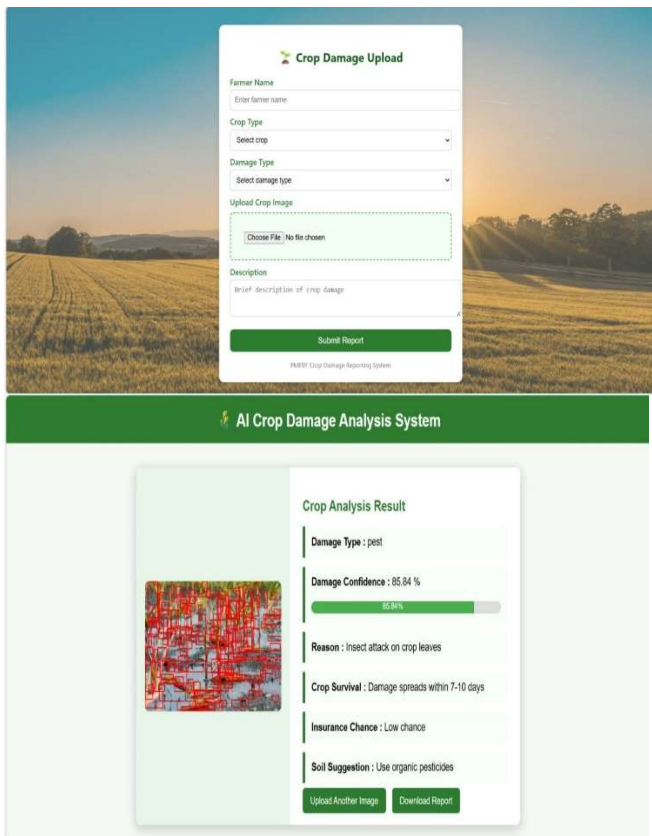
The system integration and workflow connects all the components of the system to ensure smooth data flow and efficient operation. The process begins when farmers or field officials capture crop images using the mobile application.

These images are then sent to the backend server and stored in the cloud database. The AI/ML image analysis system processes the images to identify crop type, growth stage, and possible crop damages.

After the analysis is completed, the results are stored in the database and displayed on the web dashboard. Authorities can monitor the crop conditions, damage reports, and alerts through the dashboard.

This integrated workflow ensures accurate crop monitoring, faster damage detection, and efficient crop insurance claim processing.





Once the images are captured, they are uploaded to the **backend server and cloud storage**. The system then processes these images using an **AI / ML image analysis model**. The model analyzes the images to identify the **crop type, crop growth stage, and overall crop health condition**. It can also detect different types of **crop damage, such as flood damage, pest attacks, water stress, or plant diseases**.

After the image analysis is completed, the results are stored in the **centralized database**. These results are then displayed through a **web dashboard**, where **government authorities and insurance agencies** can monitor crop conditions in real time. The dashboard also provides **damage alerts, crop reports, and visual data** that help authorities make faster decisions regarding crop insurance claims.

The proposed system reduces the need for **manual field inspections** and helps improve the **accuracy and transparency** of crop damage assessment. By using **AI-based automated analysis**, the system can process crop data quickly and provide reliable information for decision making.

Proposed System

The **proposed system** introduces an **AI-based real-time crop image analytics platform** designed to improve crop monitoring and support the crop insurance process. The system uses **mobile technology, artificial intelligence, and cloud computing** to collect and analyze crop information more efficiently.

In this system, **farmers and field officials** can capture **geo-tagged crop images** using a **mobile application**. The application provides a **simple and user-friendly interface** that guides users to capture clear crop images during different **crop growth stages**. Each captured image is automatically attached with **GPS location data**, which helps identify the exact location of the crop field.

Overall, the **AI-based crop image analytics system** improves the **speed, efficiency, and reliability** of crop monitoring and insurance claim processing. It helps authorities track crop conditions across large regions while ensuring that farmers receive **faster and fair compensation** during crop loss situations.

System Components

User Interface (Frontend)

The **User Interface (Frontend)** provides a **mobile application** for **farmers and field officials** to capture and upload **crop images**. The application is designed with a **simple and user-friendly interface** so that users can easily take photos and select the **crop type or growth stage**.

Each captured image is attached with **GPS location (Geo-tagging)** and uploaded to the **backend server** for further analysis. This component helps in **easy data collection and smooth interaction** between users and the system.

Backend (Server & Application Logic)

The **Backend** manages the **core operations and data processing** of the system. It receives **crop images and information** from the **mobile application** and processes them through the **AI/ML analysis module**.

The backend also handles **data storage, system communication, and request processing** between different components such as the **frontend, database, and web dashboard**. This layer ensures **smooth system functionality and efficient data management**.

Database

The **database** is used to store and manage all the **crop-related information** collected from the system. It stores details such as **uploaded crop images, farmer information, crop type, geo-location data, and AI analysis results**.

The database provides **secure data storage and quick access to information**, which helps authorities retrieve crop data whenever required. It also maintains **historical records of crop conditions**, which can be useful for monitoring and analysis. This component ensures **efficient data management and reliable system performance**.

AI-Based Image Analysis Module

The AI-Based Image Analysis Module processes the crop images uploaded from the mobile application. It uses Artificial Intelligence and Machine Learning algorithms to analyze the images and identify important crop details such as crop type, growth stage, and crop health condition.

The system can also detect possible crop damages like pest attacks, diseases, flooding, or water stress

by examining patterns in the images. After analysis, the results are sent to the database and web dashboard for monitoring and decision-making. This module helps provide fast and accurate crop assessment, reducing the need for manual field inspection.

Cloud Computing Infrastructure

The Cloud Computing Infrastructure provides a reliable platform for storing and processing large amounts of crop data and images. All uploaded data from the mobile application is stored securely in the cloud server, ensuring easy access and data safety.

The cloud supports data storage, AI processing, and system communication between different components such as the backend, database, and web dashboard. It also allows the system to scale efficiently, handling multiple users and large datasets without affecting performance.

Administrative Web Dashboard

The Administrative Web Dashboard serves as a centralized platform for government authorities, agricultural officers, and system administrators to monitor and manage crop-related information collected by the system. It provides a clear and organized view of the uploaded crop images, AI analysis results, and crop condition reports.

Through the dashboard, officials can access detailed information about crop type, growth stage, health status, and possible crop damages identified by the AI system. The dashboard may also include map-based visualization using geo-location data, which helps authorities easily identify the location of affected crop areas.

In addition, the dashboard allows administrators to track data records, generate reports, and review historical crop information for analysis. This helps in improving transparency, monitoring crop conditions efficiently, and supporting faster

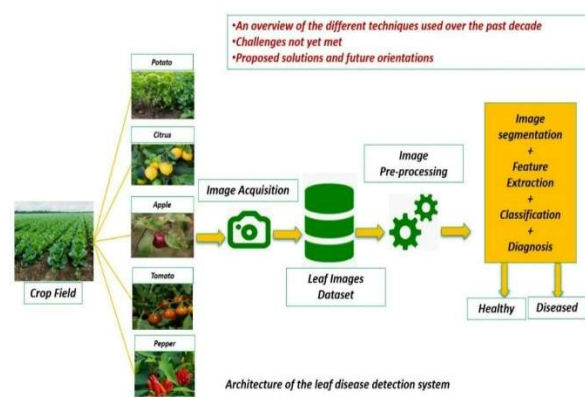
decision-making for crop insurance claim verification and agricultural management.

System Workflow and Integration

The **System Workflow and Integration** component ensures smooth communication and coordination between all parts of the system, including the **mobile application, backend server, database, AI analysis module, cloud infrastructure, and web dashboard.**

When a user captures and uploads a **crop image** through the mobile application, the data is sent to the **backend server** for processing. The backend then forwards the image to the **AI-based image analysis module**, where the system analyzes the crop condition and identifies possible damages. The analysis results are then stored in the **database and cloud storage.**

Finally, the processed information is displayed on the **administrative web dashboard**, where authorities can monitor crop conditions and review reports. This integrated workflow ensures **efficient data flow, faster analysis, and accurate crop monitoring across the entire system.**



Advantages

1 Faster Crop Damage Assessment

The proposed system helps in **quickly analyzing crop conditions** using AI-based image processing. Farmers or field officers can capture crop images through the mobile application, and the system automatically analyzes them. This significantly reduces the time required for **manual field inspections**, enabling faster processing of crop insurance claims and quicker response from authorities.

2. Improved Accuracy in Crop Analysis

By using **Artificial Intelligence and Machine Learning techniques**, the system can accurately identify **crop type, growth stage, and possible crop damages.** Automated analysis minimizes human errors that may occur during manual inspection and helps in producing **more reliable and consistent results.**

3. Real-Time Crop Monitoring

The system enables **real-time monitoring of crop conditions** through the integration of mobile applications, cloud infrastructure, and a web dashboard. Authorities and administrators can easily view **current crop status and damage reports**, allowing them to take necessary actions quickly when problems occur.

4. Geo-Tagged Data Collection

Each crop image captured through the mobile application is automatically attached with **GPS location information (geo-tagging).** This helps officials identify the **exact geographical location of the crop field**, making it easier to verify crop damage and monitor agricultural conditions across different regions.

5. Reduction in Manual Effort

Traditional crop inspection requires physical field visits and manual data recording, which can be time-consuming and labor-intensive. The proposed

system automates the image analysis and data collection process, thereby reducing manual workload for agricultural officers and improving overall efficiency.

6. Efficient Data Storage and Management

All uploaded images, crop information, farmer details, and analysis results are stored in a centralized database supported by cloud infrastructure. This allows secure data storage, easy retrieval of information, and maintenance of historical crop records, which can be useful for future agricultural analysis and policy planning.

7. Better Decision Making for Authorities

The system provides clear reports, analysis results, and visual dashboards for government officials and administrators. With access to accurate crop condition data and damage reports, authorities can make faster and more informed decisions regarding crop insurance claims, disaster relief measures, and agricultural support programs.

Conclusion

The proposed system provides an **efficient and technology-driven solution** for monitoring crop conditions and assessing crop damage. By integrating **mobile applications, Artificial Intelligence, cloud infrastructure, and web-based dashboards**, the system enables accurate and automated analysis of crop images. This helps in identifying **crop type, growth stage, and possible crop damages** more effectively.

The use of **AI-based image analysis** reduces the need for manual field inspections and minimizes human errors in crop assessment. Farmers and field officers can easily capture and upload crop images through the mobile application, while government authorities can monitor and review the analysis results through the **administrative web dashboard**.

In addition, the use of **geo-tagged data and centralized cloud storage** improves data management and allows authorities to track crop conditions across different regions. This supports faster verification of crop damage and more efficient processing of **crop insurance claims**.

Overall, the proposed system improves **accuracy, efficiency, and transparency** in crop monitoring and damage assessment. It also supports better decision-making for agricultural authorities and helps in providing timely assistance to farmers.

References

1. Alex Krizhevsky, Ilya Sutskever, and Geoffrey Hinton, "ImageNet Classification with Deep Convolutional Neural Networks," in *Advances in Neural Information Processing Systems*, 2012.
2. Sharada P. Mohanty, David P. Hughes, and Marcel Salathé, "Using Deep Learning for Image-Based Plant Disease Detection," *Frontiers in Plant Science*, 2016.
3. Konstantinos P. Ferentinos, "Deep Learning Models for Plant Disease Detection and Diagnosis," *Computers and Electronics in Agriculture*, 2018.
4. David P. Hughes and Marcel Salathé, "An Open Access Repository of Images on Plant Health to Enable the Development of Mobile Disease Diagnostics," 2015.
5. Yann LeCun, Yoshua Bengio, and Geoffrey Hinton, "Deep Learning," *Nature*, Vol. 521, pp. 436–444, 2015.

- 6. Food and Agriculture Organization, “Digital Agriculture: Transforming the Future of Farming,” FAO Report, 2019.**

- 7. World Bank, “ICT in Agriculture: Connecting Smallholders to Knowledge, Networks, and Institutions,” World Bank Publication, 2017.**

- 8. International Crops Research Institute for the Semi-Arid Tropics, “Smart Agriculture Technologies for Crop Monitoring,” Research Report, 2020.**

- 9. International Journal of Computer Vision, “Advances in Computer Vision for Agricultural Applications,” 2019.**
- 10. IEEE, “Artificial Intelligence Applications in Smart Agriculture,” IEEE Conference Proceedings, 2021.**