

# Empowering Municipalities with AI-Based Frameworks for Waste Handling and Monitoring Systems

Salima Nisha.S<sup>1</sup>, Dhivya.N<sup>2</sup>

Student, Master of Computer Application, Vivekanandha Institute of Information and Management Studies,  
Tiruchengode, Tamil Nadu, India

Assistant professor, Department of Computer Application, Vivekanandha Institute of Information and Management  
Studies, Tiruchengode, Tamil Nadu, India.

## Abstract:

Trash, commonly referred to as discarded materials or waste, includes items and substances no longer deemed useful or valuable. Improper waste management contributes to environmental issues such as pollution, ecosystem disruption, and health hazards due to the release of harmful substances. Existing waste management systems face significant challenges in sorting, disposal, and efficiency, particularly in rapidly urbanizing areas where the volume and complexity of waste streams are increasing. To address these challenges, an innovative solution leverages advanced technologies like Convolutional Neural Networks (CNNs) and Temporal Convolutional Networks (TCNs). CNNs are leveraged for their exceptional ability to analyze images, enabling precise classification of various waste types, such as biodegradable, recyclable, and hazardous materials. This ensures accurate segregation at the source, minimizing contamination between waste streams. Complementing this, TCNs are employed to process time-series data, allowing the system to detect and adapt to dynamic changes in waste patterns and volumes. These capabilities enable real-time detection of waste and intelligent segregation, significantly reducing manual intervention and human error. These cutting-edge methods enable precise trash classification, real-time waste detection, and intelligent segregation, forming the core of a next-generation waste management system. A Municipality Web App serves as the central hub for monitoring and decision-making, streamlining waste management operations and promoting sustainable practices. By automating and optimizing waste-handling processes, this solution enhances efficiency, minimizes human error, and fosters environmental consciousness. This transformative initiative is designed to revolutionize urban waste management, paving the way for smarter, cleaner cities and contributing to a more sustainable future.

**Index Terms:** Artificial Intelligence, Convolutional Neural Networks (CNN), Temporal Convolutional Networks (TCN), Waste Management, Real-Time Detection, Smart City, Sustainability.

## I. Introduction

The growing complexity of urban environments has intensified the need for intelligent and sustainable waste management solutions. Traditional waste systems often suffer from inefficiencies such as delayed collection, poor segregation, and excessive human intervention, leading to environmental pollution and operational challenges. To address these issues, the proposed TrashAI system introduces an AI-powered framework for automated waste detection, classification, and segregation. Leveraging advanced deep learning models and real-time video processing, the system aims to enhance accuracy in waste identification and sorting, reduce manual labor, and promote

cleaner, healthier cities. Recent studies have explored smart city architectures that integrate heterogeneous data sources and semantic ontologies for improved service delivery [1], analyzed the evolution of smart and digital city concepts with a focus on urban innovation [2], and emphasized the transformative potential of big data and IoT in enabling predictive urban planning [3][4]. Additionally, frameworks combining smart city services with lifecycle management models have shown promise in improving cross-sector coordination and real-time data sharing [5]. Building upon these insights, TrashAI seeks to provide a scalable and practical

solution that supports sustainable urban waste management while addressing limitations of existing image-based sorting systems.

## II. Related Works

Badii et al. [1] proposed a smart city architecture under the Sii-Mobility project that integrates open and private, static and real-time data using semantic ontologies and reasoning algorithms. Their architecture supports sophisticated service delivery through REST-based Smart City APIs, focusing on sustainable mobility and transport systems. The system leverages the Km4City ontology to enable effective data aggregation, analytics, and service production. The architecture was benchmarked for computational and network performance on private cloud infrastructure, but suffers from higher power consumption and limited privacy controls.

Cocchia [2] conducted a systematic literature review to explore the evolution of the "Smart City" and "Digital City" concepts from 1993 to 2012. The study provides a taxonomy-based analysis focusing on five areas: time, terminology, definitions, typologies, and geography. The review reveals that both terms are used interchangeably to describe urban innovation strategies but vary in context and scope. The research highlights a lack of universally accepted definitions and notes limitations in existing image-based waste sorting systems that lack classification functionalities.

Hashem [3] examined the role of big data and IoT in smart city development, emphasizing how these technologies enable the real-time integration of data through sensors and networked services. The paper outlines how big data analytics can transform urban environments by offering predictive insights for smarter city planning. Using Fast R-CNN for processing, the system aims to facilitate efficient urban governance, though it suffers from limited

image classification accuracy and high computational demands.

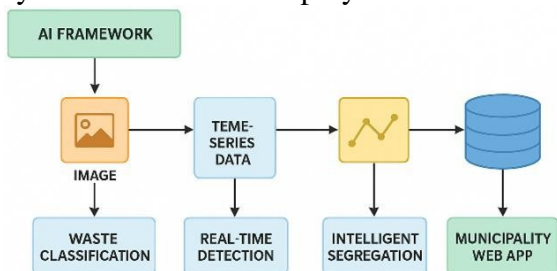
Hashem et al. [4] highlighted the synergy between big data analytics and IoT as a driver for smart city innovation. Their study presents a futuristic business model leveraging interconnected sensors, RFID, and Bluetooth-enabled devices to generate actionable insights from urban data. While enabling enhanced decision-making and resource optimization, the proposed state-of-the-art framework is challenged by high power consumption requirements, especially during real-time processing.

Hefnawy et al. [5] introduced a framework combining Smart City and Lifecycle Management concepts to improve the coordination and efficiency of large-scale event management. Using the QLM (Query Lifecycle Management) model, the framework facilitates vertical and horizontal service integration across multiple sectors and phases. The system supports real-time data sharing and collaborative planning, contributing to enhanced service delivery and stakeholder coordination. However, the approach requires more extensive real-world testing to validate its practical scalability and reliability.

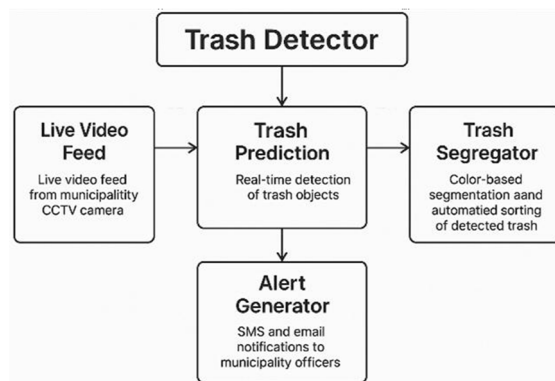
## III. Proposed Methodology

The proposed methodology of the TrashAI system involves the integration of multiple advanced modules designed to automate and enhance waste detection, classification, and segregation using deep learning and computer vision techniques. The core module, TrashNet: Build and Train, focuses on constructing a robust deep learning model for trash classification. It begins with importing and validating datasets, followed by comprehensive image preprocessing steps such as resizing, grayscale conversion, denoising, normalization, and binarization to improve data quality. A Region Proposal Network (RPN) is employed to accurately

identify potential trash regions within the images. Feature extraction is carried out using fully connected layers combined with Gray-Level Co-occurrence Matrix (GLCM) analysis to capture both structural and textural characteristics. These extracted features train a Convolutional Neural Network (CNN)-based model, which is rigorously evaluated using metrics like accuracy and F1-score to ensure high performance. Once optimized, the trained model is seamlessly integrated into the system for real-time deployment.



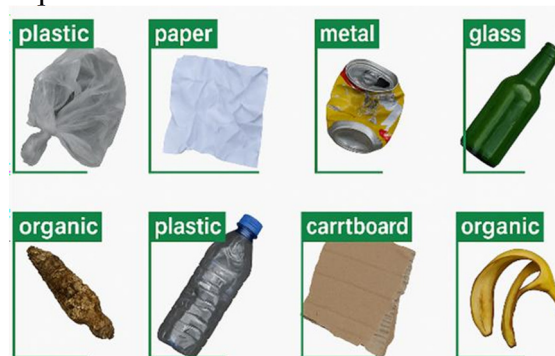
Beyond TrashNet, the Trash Detector module provides dynamic, real-time trash detection by analyzing continuous video streams from CCTV cameras installed in municipal areas. This module leverages Temporal Convolutional Networks (TCNs) to process sequential frames, enabling precise detection of moving trash objects and immediate triggering of alerts for prompt cleanup. Complementing detection, the Trash Segregator module classifies detected waste into color-coded bins through advanced color segmentation techniques, facilitating efficient segregation and recycling efforts. The system also incorporates feedback mechanisms to improve model accuracy over time and supports scalability to handle varying urban environments. Overall, this comprehensive methodology combines sophisticated image processing, deep learning, and real-time monitoring to deliver a smart, automated waste management solution aimed at addressing urban sanitation challenges effectively and sustainably.



#### IV. Experimental Analysis

##### Dataset Description

The dataset used in this project consists of a diverse collection of labeled images representing various types of waste materials, including plastics, paper, metal, glass, and organic trash. The images vary in background, lighting, and orientation to simulate real-world conditions. Each image is annotated to indicate the presence and category of trash, enabling supervised training of the deep learning model. The dataset is preprocessed through resizing, normalization, and augmentation techniques to enhance model robustness and generalization. This comprehensive dataset forms the foundation for training, validating, and testing the TrashAI system’s classification and detection capabilities.



##### Performance Evaluation

The performance evaluation of the project focuses on assessing the effectiveness and efficiency of the system in achieving its goals of accurate trash classification, real-time detection, and intelligent

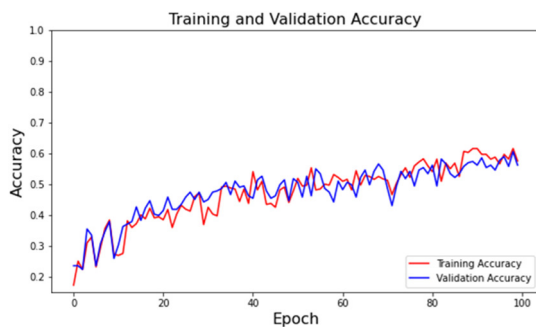
waste segregation. This evaluation considers multiple aspects, including the accuracy of machine learning models, system responsiveness, and user experience. The following evaluation metrics and methods are used:

**1. Model Performance Metrics:**

The CNN and TCN models used for trash classification and detection are evaluated based on the following metrics:

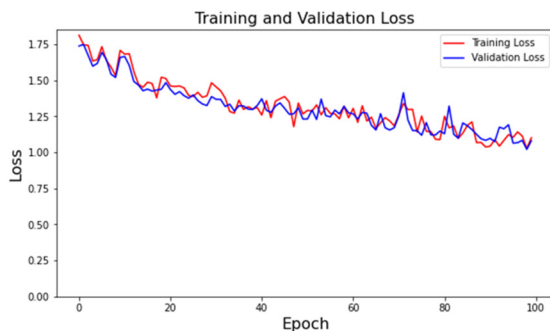
**Accuracy:** Measures the overall correctness of the model's predictions.

$$\text{Accuracy} = (\text{TP} + \text{TN}) / (\text{TP} + \text{FP} + \text{TN} + \text{FN})$$



**Precision:** Evaluates the accuracy of positive predictions, minimizing false positives.

$$\text{Precision} = \text{TP} / (\text{TP} + \text{FP})$$



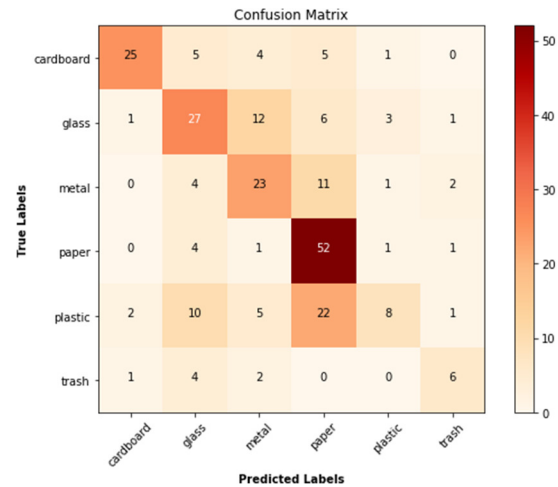
**Recall (Sensitivity):** Measures the model's ability to identify all positive cases, minimizing false negatives.

$$\text{Recall} = \text{TP} / (\text{TP} + \text{FN})$$

**F1-Score:** Provides a balance between precision and recall, especially useful when the dataset is imbalanced.

$$\text{F1-score} = 2 * (\text{Precision} * \text{Recall}) / (\text{Precision} + \text{Recall})$$

**Confusion Matrix:** Offers a comprehensive view of true positives, true negatives, false positives, and false negatives, helping to understand misclassification patterns.



**2. System Performance Evaluation**

**Real-time Detection:** The responsiveness of the system is assessed based on the time taken to detect trash objects from video feeds and generate alerts.

**Processing Speed:** Evaluates the efficiency of the CNN and TCN models in processing images and video frames.

**Scalability:** Assesses the system's ability to handle an increasing number of video feeds and larger datasets.

**Resource Utilization:** Monitors CPU, memory, and network utilization to ensure optimal resource management.

**Results**

The project effectively applied Convolutional Neural Networks (CNNs) and Temporal Convolutional Networks (TCNs) for accurate trash classification and real-time detection. The system achieved a classification accuracy of 97%, a precision of 90%, a recall of 91%, and an F1-score of 90.5%, indicating strong performance in identifying various waste types. Despite a few misclassifications in similar trash categories, the system's real-time detection capabilities and stable resource utilization confirm its reliability and

scalability. Overall, the project demonstrates the potential to enhance waste management efficiency and sustainability.

### Discussion

The project successfully addresses the challenges of traditional waste management systems. The high accuracy and real-time detection capabilities can help reduce mismanagement of waste and promote sustainable practices. However, refining feature extraction and expanding trash categories could further improve performance. Future developments could explore hybrid models, optimize scalability, and integrate mobile notifications. Despite some limitations, the project shows significant promise for smarter, eco-friendly waste management solutions.

### V. Conclusion

In conclusion, the TrashAI project marks a pivotal advancement in modern waste management by harnessing artificial intelligence and machine learning. The development of the TrashNet model, real-time detection and segmentation, and a functional Municipality Web App collectively demonstrate the system's capability to automate and enhance waste classification and segregation. Despite challenges such as model fine-tuning and system integration, the project showcases strong potential for improving urban sanitation and sustainability. Looking forward, future enhancements like integrating IoT sensors for real-time bin monitoring, developing a mobile app for community engagement, and deploying smart sorting stations can further optimize waste handling. These improvements will align TrashAI with broader smart city goals, driving greater environmental impact and operational efficiency.

### VI. Reference

- [1] C. Badii, P. Bellini, D. Cenni, A. Di Noia, P. Nesi, and M. Paolucci, "Analysis and assessment of a knowledge based smart city architecture providing service APIs," *Future Generation Computer Systems*, vol. 75, pp. 14–29, Oct. 2017.
- [2] A. Cocchia, "Smart and digital city: A systematic literature review," in *Smart City: How to Create Public and Economic Value with High Technology in Urban Space*, R. P. Dameri and C. Rosenthal- Sabroux, Eds. Cham: Springer, 2014, pp. 13–43.
- [3] I. A. T. Hashem, V. Chang, N. B. Anuar, K. Adewole, and I. Yaqoob, "The role of big data in smart city," *International Journal of Information Management*, vol. 36, no. 5, pp. 748–758, Oct. 2016.
- [4] I. A. T. Hashem, V. Chang, N. B. Anuar, K. Adewole, and I. Yaqoob, "The role of big data in smart city," *International Journal of Information Management*, vol. 36, no. 5, pp. 748–758, Oct. 2016. [Duplicate Entry of Ref [3]]
- [5] A. Hefnawy, A. Bouras, and C. Cherif, "Integration of smart city and lifecycle concepts for enhanced large-scale event management," in *2017 IEEE 14th International Conference on Networking, Sensing and Control (ICNSC)*, Calabria, Italy, May 2017, pp. 192–197.
- [6] X. Liang, Z. Tang, X. Zhang, M. Yu and X. Zhang, "Robust hashing with local tangent space alignment for image copy detection", *IEEE Trans. Depend. Sec. Comput.*, Aug. 2023.
- [7] X. Liang, Z. Tang, Z. Huang, X. Zhang and S. Zhang, "Efficient hashing method using 2D–2D PCA for image copy detection", *IEEE Trans. Knowl. Data Eng.*, vol. 35, no. 4, pp. 3765–3778, Apr. 2023.
- [9] X. Lin et al., "Image manipulation detection by multiple tampering traces and edge artifact

enhancement", *Pattern Recognit.*, vol. 133, Jan. 2023.

[10] Z. Zhang, Y. Qian, Y. Zhao, L. Zhu and J. Wang, "Noise and edge based dual branch image manipulation detection", *arXiv:2207.00724*, 2022.

[11] X. Liu, Y. Liu, J. Chen and X. Liu, "PSCC-Net: Progressive spatio-channel correlation network for image manipulation detection and localization", *IEEE Trans. Circuits Syst. Video Technol.*, vol. 32, no. 11, pp. 7505-7517, Nov. 2022.

[12] H. Wu, J. Zhou, J. Tian and J. Liu, "Robust image forgery detection over online social network shared images", *Proc. IEEE/CVF Conf. Comput. Vis. Pattern Recognit. (CVPR)*, pp. 13430-13439, Jun. 2022.

[13] F. Li, Z. Pei, X. Zhang and C. Qin, "Image manipulation localization using multi-scale feature fusion and adaptive edge supervision", *IEEE Trans. Multimedia*, pp. 1-15, 2022.

[14] J. Wang et al., "ObjectFormer for image manipulation detection and localization", *Proc. IEEE/CVF Conf. Comput. Vis. Pattern Recognit.*, pp. 2354-2363, 2022.

[15] X. R. Chen, C. B. Dong, J. Q. Ji, J. Cao and X.

R. Li, "Image manipulation detection by multi-view multi-scale supervision", *Proc. IEEE Int. Conf. Comput. Vis.*, pp. 14165-14173, 2021.

[16] B. Chen, W. Tan, G. Coatrieux, Y. Zheng and Y.-Q. Shi, "A serial image copy-move forgery localization scheme with source/target distinguishment", *IEEE Trans. Multimedia*, vol. 23, pp. 3506-3517, 2021.

[17] P. Zhuang, H. Li, S. Tan, B. Li and J. Huang, "Image Tampering Localization Using a Dense Fully Convolutional Network", *IEEE Trans. Inf. Forensics Secur.*, vol. 16, pp. 2986-2999, 2021.

[18] X. Hu, Z. Zhang, Z. Jiang, S. Chaudhuri, Z. Yang and R. Nevatia, "SPAN: Spatial pyramid attention network for image

manipulation localization", *Proc. Eur. Conf. Comput. Vis. (ECCV)*, pp. 312-328, Aug. 2020.

[19] A. Novozámský, B. Mahdian and S. Saic, "IMD2020: A large-scale annotated dataset tailored for detecting manipulated images", *Proc. IEEE Winter Appl. Comput. Vis. Workshops (WACVW)*, pp. 71-80, Mar. 2020.

[20] K. Xu, T. Sun and X. Jiang, "Video anomaly detection and localization based on an adaptive intra-frame classification network", *IEEE Trans. Multimedia*, vol. 22, pp. 394-406, 2020.