

Spatial Distribution of Educational Schools in Meiktila Township, Mandalay Region, Myanmar

ThidaHlaing*

(Associate Professor, Department of Geography, Sittway University, Rakhine State, Myanmar)

Corresponding email: dr.thidahlaing72@gmail.com

Abstract – The main aim of this paper is to analyze the spatial distribution of Basic Educational Schools and Higher Education School in Meiktila Township within the Central Myanmar. The development of one nation is connected with education and literacy. One of the many important sectors for the social development of Meiktila Township is educational sector. During the regime of ancient Myanmar Kings, Buddhist monastic education played an important role in upgrading religion and cultural standard of people. The Myanmar Government has spent enormous amount of money for education and has also increased the yearly expenditure. In Meiktila Township, the education sector can be divided into two levels: the higher education level and the basic education level. The study areas are situated Meiktila Town Proper and 58 village tracts. It was aimed to assess the role of education sector of Meiktila Township. In Meiktila Township, there are 33,357 graduates from various universities and institutes. As the literacy movement township – wise was launched during the summer vacations since 1964, the literacy rate of Meiktila Township reached 99.83% in the year 2018.

Key words: students, teacher, urban area, rural area.

I. INTRODUCTION

Education is the process of facilitating learning, or the acquisition of Knowledge, skills, values, beliefs and habits. A spatial distribution is the arrangement of a phenomenon across the Earth's surface and a graphical display of such an arrangement is an important tool in geographical and environmental statistics. This research paper is

presented on spatial distribution of Basic Educational Schools and Higher Education School in Meiktila Township. The distributional pattern is not uniform. The analysis surveyed the close relationships between geographically factors on one hand and the distributed pattern of schools on the other. This is a brief account on that relationship.

Aim and Objectives

The main objectives of the research paper are to find out the ways for the future generation of the spatial distribution of the Meiktila Township. These objectives are,

- * To show the analysis on the relationship between the spatial location of school;
- * To analysis the distributional pattern of school and
- * To investigate the teacher – student ratio in the study area
- * To purpose the suggestion for the future education in Meiktila Township

II. MATERIAL AND METHODS

Study Area

The study area is Meiktila Township, one of the townships in Mandalay Region. It is situated in Central Dry Zone of Myanmar. Meiktila Township is located between 20° 39'15" N and 21° 00' N Latitudes; and 95° 30' 40"E and 96° 00' 55" E Longitudes (See Fig 1). The area of Meiktila Township is 475.36 square miles (304,234 acres). The township composes of Meiktila Town that made up 15 Wards, and 58 village tracts. The study area of this research paper is Meiktila Township. In 2018, the total population of

Meiktila Township was 303,201 persons. Of this total, the urban population constitutes 100,749 with the 33.23 percent and the rural population 202,452 persons with the 66.77 percent. This research paper is based on both primary data and secondary data. For the presentation of this paper, required data and maps are available from the secondary source. Some facts and figures are also obtained from the Gazetteers. Quantitative and Qualitative Methods are used in this paper. This research paper is study period from August 2018 - 2019.

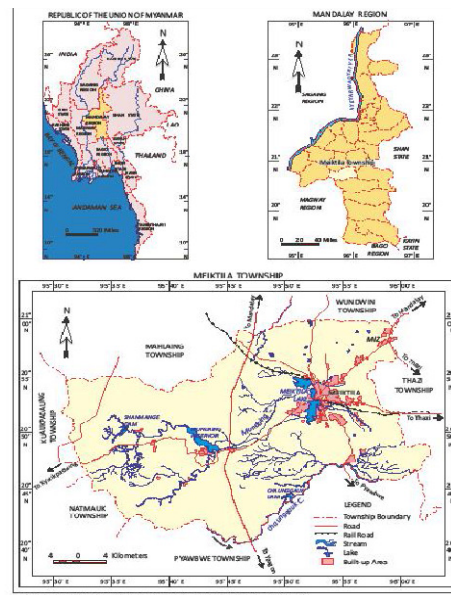


Figure. 1 Location of Meiktila Township
Source: Based on UTM Map 2095-09, 2095-10, 2095-13, 2095-14, 2095-01 and 2195-16.

III.SpatialDistribution of Educational Schools inMeiktila Township

The development of one nation is connected with education and literacy. One of the many important sectors for the socialdevelopment of Meiktila Township iseducation sector. During the regime of ancient Myanmar Kings, Buddhist monastic education played an important role in upgrading religion and cultural standard of people. The Myanmar Government has spent enormous amount of money for education and has also increased the yearly expenditure. In Meiktila Township, the education sector can be divided into two levels: the higher education level and the basic education level.

With regard to higher education level, Meiktila University, Education College, Institute of Economics, Institute of Government Technology, Myanmar Aerospace Engineering University (M.A.E.U), Institute of Computer and Nursing Training School are established in Meiktila Township.

Meiktila University is situated in No.9 Aungsan Ward. It has an area of 45.82 acres and was opened on 23th January 2001. The number of teachers and students in this University are 320 persons and 7,882 persons, respectively. Therefore, the teacher - student ratio for higher education level is 1:25.

Institute of Economics was located in Kanthar Village. It has an area of 100.0 acres and opened on 14th June 2001. The number of teachers and students in this University are 116 persons and 2,940 persons, respectively. Therefore, the teacher - student ratio for higher education level is 1:25.

Myanmar Aerospace Engineering University is situated in Zaungchankone Ward. It has an area of 115.84 acres and was opened on 1st August 2002. The number of teachers and students in this University are 111 persons and 605 persons, respectively. Therefore, the teacher - student ratio for higher education level is 1:5.

Institute of Government Technology was located in Wunzin Ward, north-eastern part of Meiktila. It has an area of 51.65 acres and opened on

20th January 2007. The number of teachers and students in this University are 142 persons and 1,858 persons respectively. Therefore, the teacher - student ratio for higher education level is 1:13.

Institute of Computer is situated in Wunzin Ward. It has an area of 51.65 acres and was opened on 20th January 2007. The number of teachers and students in this University are 67 persons and 605 persons, respectively. Therefore, the teacher - student ratio for higher education level is 1:9.

Education College was located in Aungsan Ward, eastern part of Meiktila. It has an area of 26.6 acres and opened on 1st October 1953. The number of teachers and students in this University are 89 persons and 2,083 persons, respectively. Therefore, the teacher - student ratio for higher education level is 1:23.

Nurse Training School was located in Aungsan Ward, eastern part of Meiktila. It has an area of 1.183 acres and opened on 22nd November 2009. The number of teachers and students in this University are 19 persons and 172

persons, respectively. Therefore, the teacher - student ratio for higher education level is 1:9. The Higher Education Level in Meiktila Township (2016) is presented in Map (1).

In Meiktila Township, there are eight Basic Education High Schools during the academic year 2016. These eight Basic Education High Schools are located in Meiktila Town proper, Nyaungkaing, Yewai and Yecho villages. In the High Schools Level, the total number of Senior Assistant Teachers (SAT) are 1,231 persons and the total number of high schools level students are 17,399 persons. Therefore, the teacher - student ratio for high school level is 1: 14.

During this academic year (2017- 2018), are ten Affiliated High Schools in Meiktila Township. They are located in Meiktila Town, Tepinkone, Kwetnge, Theinkone, Shwesitthi, Gweaing, Tawma, Aleywa, Mwe and Kyaukphu (West) villages. In the High Schools Level, the total number of Senior Assistant Teachers (SAT) are 884 persons and the total number of high schools level students are 6,382 persons.

Therefore, the teacher - student ratio for high school level is 1: 72.

During the academic year 2016, there are five Basic Education Middle Schools and 24 Affiliated Middle Schools .In the Middle Schools Level, the total numbers of Junior Assistant Teachers (JAT) are 153 persons and the total number of Middle schools level students are 3,284 persons. Therefore, the teacher - student ratio for Middle School level is 1: 21.

.In Meiktila Township, there is 14 Basic Education Post Primary Schools and 213 Basic Education Primary Schools are located in nearly all village tracts. The total number of Primary Assistant Teachers (PAT) is 2104 persons and the total number of Primary Schools level students are 16,383 persons. Therefore, the teacher - student ratio for Primary Schools level is 1: 34.

There are 20 Monastic Primary Schools in Meiktila Township during the academic year 2017 - 2018. One Monastic Primary Schools are situated Meiktila Town proper and 19 MonasticPrimary Schools are situated in

18 villages. The number of teachers and students in these Monastic Primary School are 166 persons and 3,232 persons, respectively. Therefore, the teacher - student ratio for Monastic Primary Schools level is 1: 19.

The distribution of basic education schools and higher education schools in Meiktila Township (2018) is presented in figure (2) and table (1), (2) and (3).

V. DISCUSSION

Studying the higher education sector and Basic Educational Schools in Meiktila Township, it enjoys the fruit of higher education, by producing degree holders in the fields of arts and science and diploma certificate holders in nursing. These degree and diploma certificate holders can raise the level of living standard and quality of life and finally their attitudes toward themselves and their environments. In Meiktila Township, there are 73,613 graduates from various universities and institutes. As the literacy movement township – wise was launched during the summer vacations since 1964, the literacy rate of

Meiktila Township reached 99.83% in the year 2018.

Table (1) The Number of Teachers and Students in Higher Education in Meiktila Township (2018)

Source: Township Education Department, Meiktila

No	University/ College	NT	NS	T – S Ratio
1	Meiktila University	320	7882	1 : 24.6
2	Institute of Economics	116	2940	1 : 25
3	Myanmar Aerospace Engineering University	111	605	1 : 6.54
4	Institute of Government Technology	142	1858	1 : 13
5	Institute of Computer	67	605	1 : 9
6	Education College	89	2083	1 : 23
7	Nursing Training School	19	172	1 : 9
	Total	864	16,145	17

Table (2) The Number of Teachers and Students in Middle School Level in Meiktila Township (2018)

Source: Township Education Department, Meiktila

No	Town / VT	NT	NS	T&S Ratio
1	Meiktila, B.E.M.S, 1	109	1,068	1 : 10
2	Meiktila, B.E.M.S , 2	53	526	1 : 10
3	Meiktila, B.E.M.S, 3	63	460	1 : 7
4	Kwetnge	43	527	1 : 12
5	Tepinkon	49	476	1 : 9
6	Mondaing	29	551	1 : 19
7	Theingon, (Myaukle)	19	710	1 : 38
9	Chisat	41	1,151	1 : 28
10	Shwesitthe	40	313	1 : 9
11	Tawma	25	1,012	1 : 48
12	Gweaing	18	500	1 : 28
13	Mwe	10	335	1 : 34
14	Aleywa	19	455	1 : 22
15	Shante	39	435	1 : 11

	(Airforce)			
16	Kyaukpu	12	398	1 : 33
	Total	333	8,376	1 : 25

Table (3) The Number of Teachers and Students in High School Level in Meiktila Township (2018)

Source: Township Education Department, Meiktila

No	SN	NT	NS	T&S(%)
1	No.1	106	3,521	1:33.2
2	No.2	84	1,973	1:23.5
3	No.3	66	1,560	1: 23.6
4	No.4	63	2,004	1:31.8
5	No.5	94	3,204	1:34.1
6	No.6	26	480	1:18.5
7	NK	42	1,110	1:26.4
8	Yewai	38	1,405	1:37
9	Yecho	32	986	1:30.8
10	Chisat	53	1,190	1:22.5
11	Aleywa	26	709	1:27.3
	Total	616	1,8178	1:29.5

Index

- Meiktila, B.E.H.S(1) = No .1
- Meiktila, B.E.H.S(2) = No.2
- Meiktila, B.E.H.S(3) = No.3
- Meiktila, B.E.H.S(4) = No.4
- Meiktila, B.E.H.S(5) = No.5
- Meiktila, B.E.H.S(6) = No.6

NyaungKaing = NK

SN = School Name

Uni = University

C= Collage

NT= Number of Teacher

NS = Number of Students

T= Teacher

S= Student

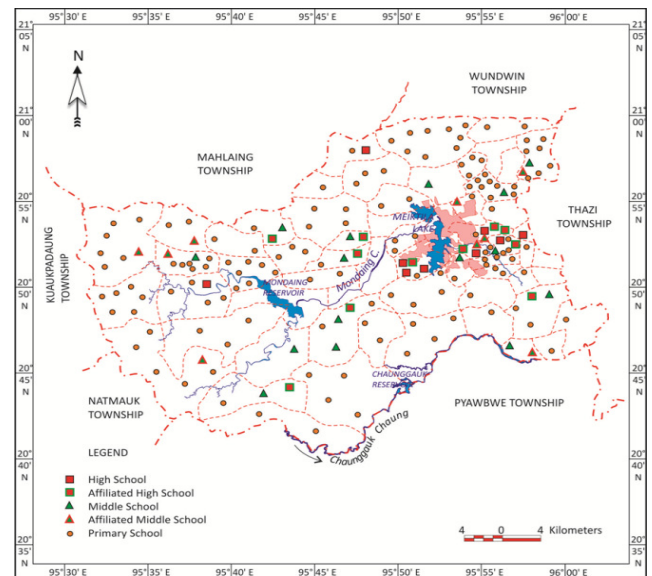


Figure. 2 Spatial Distribution of Educational Schools in Meiktila Township(2018)

Source: Township Education Department, Meiktila

V. CONCLUSION

In Meiktila Township, studying from the increasing of urban populations

on the yearly census, the population's number of each year slowly increased. This was between deficiency of education and economic; the any other town could attract very few people from rural area for their settlement. The proportion of rural population is gradually slow. As a result the education of Meiktila Township depends heavily on rural Students. The spatial pattern differs which location diversity. The distribution of population is closely interrelated with sparse or nucleated patterns. There were 198 Basic Education Schools in Meiktila. A great number of schools are founding and around the Central Business District Area such as Myomalay and Nandawgon ward within Meiktila Town. There are fewer numbers of schools in the outer zone and sub-urban areas such as Chiset ward and Pyithaya (north) Ward in urban area. The student density was thick in the downtown areas.

The location of schools also depends on the number of population. There are more numerous in congested and populated areas. Similarly, there is less number of schools in thinly populated wards. There is less extension

in number of schools, in favor of building more than teaching halls and school rooms. The new schools should be better established instead of teaching halls or extension of school floor space. There is also difference pattern in school to another. But naturally they can never be the same. But the important thing is that only some schools have the proper facilities for studies.

As the distribution of school, differ, so there is unequal density of students. The location of schools with respect to wards also shows some contrast. Those should be at least one primary school in each ward; instead there are many wards without having any such schools in each.

ACKNOWLEDGEMENT

First and foremost, I wish to express deeply thankful to my retire Professor Dr Thein Htut for his valuable guidelines, reading proof and Dr Kan Tun (Associate Professor, Sittway University) for their help and some advices.

REFERENCES

1. Alexander, Economic Activities, J.C (1963) Prentice Hall Eagle Wood Cliffs, N.J.
2. Alexander, "Introduction to Spatial Analysis",

- John (1963) Prentice- Hall, Eagle wood Cliffs, N.J:
3. Clarke, Population Geology, reprinted in 1968;
John. I. Pergnmon Press Ltd, Oxford.
(1968)
4. Fellmann, Human Geography, Landscapes
Getis of Human Activities, Ninth Edition,
(2007) Published by McGraw-
Hill Comparies, New York