

## CHARACTER ANALYSIS IN KOREAN DRAMA FILM LAW SCHOOL AND ITS IMPLICATIONS LITERATURE LEARNING

Jurike Erlina Pandey, Santje Iroth, Theresye Wantania

*Department of Indonesian Language and Literature Education*

**Abstract:**The purpose of this study is to describe the character traits of the Korean drama Law School and their implications for learning literature. The method used is a qualitative descriptive research method because the data used are in the form of verbal data that require descriptive explanation, as well as the source of the data taken from the Korean drama Law School. To reveal the contents of the Korean drama Law School, the researcher analyzed it by watching one episode at a time and then summarizing it to collect clear data. The analysis technique used is content analysis or (content analysis). From the results of the analysis, the researcher found various characters found in several characters in the Korean drama Law School, namely: Professor Yang Jong Hoon's assertiveness, Professor Yang Jong Hoon's kind and considerate character, Professor Kim Eun Seok, Han Joon Hwi, Kang Sol A, Kang Sol B, and Jeon Ye Seul, someone who is smart owned by Han Joon Hwi, Kang Sol B and Seo Ji Ho, the character of an ambitious person owned by Kang Sol A and Seo Ji Ho, the character of someone who has a pleasant personality is owned by Professor Kim Eun Seok, Kang Sol B who has an ignorant character and finally Ko Hyeong Soo who has a bad character. The implication is to apply these characters in learning literature in accordance with existing conditions. Kang Sol B who has an ignorant character and lastly Ko Hyeong Soo who has an evil character. The implication is to apply these characters in learning literature in accordance with existing conditions. Kang Sol B who has an ignorant character and lastly Ko Hyeong Soo who has an evil character. The implication is to apply these characters in learning literature in accordance with existing conditions.

Keywords: character traits, drama, implications

### INTRODUCTION

Characters are one of the important elements in drama and each character has different characteristics and characteristics. In studying a drama, knowing the character's character is very important, especially for people who will research or analyze drama.

Disposition is the human inner nature that influences all human thoughts and behavior. Echols and Shadily (2000: 107) write that character in English means the character or character possessed by a person. Allport (Alwisol, 2004: 274) says that character is synonymous with personality declaring a rule of behavior related to people's thoughts such as good or bad.

Literary work is an art form that displays beauty through the use of language that is interesting, varied, and full of imagination (Keraf, 2002: 115). Literature is a tool used by the author which contains ideas and ideas for works of art. In accordance with the nature of literature, namely Dulce et Utile which means beautiful and useful, Watt argues that good literary works provide functions, as: (1) pleasing or entertainment enjoyment, which means that literary works are seen as regulators of the rhythm of life and

balancing tastes. (2) instructing or giving certain teachings, which inspire the spirit of life. That is, literary works are expected to reflect didactic aspects (Suwardi, 2011:22).

In today's modern era, technological developments are becoming very rapid, one of which is in the field of communication and information. One of the communication media is film. Film is a medium of public entertainment which is increasingly in demand. Every film produced has a specific purpose and objective so that it can be understood by the audience. Apart from that, wanting to convey explicit or implied meanings, films are also constructed to reflect and convey things that happen in society. So it can be said that what is depicted in a film is of course also inspired by the reality that exists in people's lives (Agatha, 2022). Film is divided into several genres including documentary, thriller, comedy, horror, religion, action, animation, fantasy and drama.

Drama is a genre of literary work which etymologically comes from the Greek *i'dran* which means to do something (Suwardi 2005: 189). While Suyoto (2006: 1) provides the following definition of drama, drama is the story of human life presented on stage based on a script, using conversation, gestures, auxiliary elements such as stage setting and witnessed by the audience. As with other literary works, drama has several important elements in it. The structure in drama is the plot or story framework, characterization and characterization, dialogue, setting, theme, and message.

Globalization that is happening to the world today, brings several changes, especially drama. Many people no longer watch dramas on stage but they can see them through television shows or gadgets, for example Korean dramas. Korean dramas are made in the form of short film series that air for only a few weeks. Many Korean dramas are based on romance stories, real stories that happened in the past, scary stories, thrillers, history, comedy, even fantasy. Korean dramas are not only for entertainment, but can be used as learning in various fields such as medicine, law, police, offices, journalism, crime, and so on.

In this study, the writer took the Korean drama film Law School which will be aired in 2021 with 16 episodes. This drama has a mystery genre, this drama was directed by Kim Seok-yoon, and written by Seo In. The reason for the writer to take the problem of the character of the characters in the Korean drama film Law School is the character of the different characters and how their character is in handling the various cases that are confronted by the characters.

## **METHOD**

The method used in this study is a qualitative descriptive research method because the data used are in the form of verbal data that require descriptive explanation. According to Sugiyono (2016: 9)

qualitative descriptive method is a research method based on postpositivism philosophy used to research on natural object conditions (as opposed to experiments) where the researcher is the key instrument. Data collection techniques are carried out in triangulation or combination, data analysis is inductive/qualitative, and qualitative research results emphasize meaning rather than generalization.

The data collection technique used by researchers is the library research method by watching and searching for supporting information via the internet to clarify the information that will be needed about the Korean Law School drama film.

The data analysis technique used in this research is content analysis technique. Content analysis (content analysis) is a qualitative research technique by emphasizing the constancy of communication content, the meaning of communication content, the reading of symbols and the meaning of the contents of symbolic interactions that occur in communication (Bungin, 2011). Meanwhile according to Weber (1994:9) content analysis is a research method using a set of procedures to make valid inferences from text

## **RESEARCH RESULT**

### **A. Character Characters in the Korean Law School Drama Film**

In accordance with the results of the researcher's observations, several scenes in the drama Law School were found which showed the character possessed by the characters, which were emphasized through the scenes that were acted out, the dialogues uttered by the characters.

#### **1. Professor Yang Jong Hoon's character**

Yang JongHoon, played by Kim Myung Min, is a famous lecturer from Hankuk University, in the Faculty of Law. Before he became a lecturer, Yang Jong Hoon was a famous prosecutor. He again had to face the law after being slandered as a suspect in the murder of Seo Byung Joo.

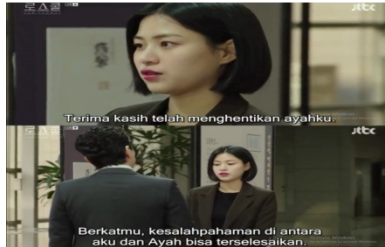
One of Yang Jong Hoon's most prominent characteristics is decisive. Professor Yang Jong Hoon's firm character began to be seen in episode 1 of the Korean drama Law School



**Figure 1. Screenshot of drama Law School eps.1 scene 00:55:35**

In this scene, the police make a visit related to the murder case of Professor Seo Byung Joo. However, Yang Jong Hoon expelled people from the police because the students in the class felt threatened, and he also did not want his course practice to be disturbed.

- a. Kind and considerate



**Figure 2. Screenshot of drama Law School eps.6 scene 00:51:37**

The picture above shows that thanks to Yang Jong Hoon, the problem between Kang Sol B and his father Kang Joo Man was resolved, by stopping Kang Joo Man from not saying much when he was a witness in the case of Seo Byung Joo's death by calling Kang Sol B with activated the loudspeaker on Yang Jong Hoon's device, Yang Jong Hoon's caring character was also seen in episode 9

2. Characteristics of Han Joon Hwi

Han JoonHwi, played by actor Kim Bum, is a law student and nephew of Professor Seo Byung Joo, an influential professor who becomes a victim of murder, so he is dragged into the case as a suspect replacing Professor Yang Jong Hoon.

- a. Someone smart

The clever character of Han Joon Hwi can be seen in episode 1 in the 11th minute, which is shown through the dialogue between Professor Yang Jong Hoon and Han Joon Hwi

Prof. Yang Jonghoon : Case number 2017D4114. Kim Cheol Su and Lee Yeong Hui are having an affair, and make their sex video. As Lee was about to leave, Kim recorded a video on her cell phone and sent it to Lee's husband. He was guilty in both the first and second trials, but the Supreme Court acquitted him. What's the crux of the matter?  
(Professor Yang Jong Hoon starts to point at students to answer)

*Bun hair!*  
(Student whose hair is in a bun, untied her hair)

Han Joon Hwi : I don't think there's anything in the bun.  
(Han Joon Hwi stands up)

*The problem is with Article 14 of the Sexual Crimes Act. Punishment for those who use a camera to record someone's body or distribute photos or videos. The crux of the matter is the word "body" which is taken literally. The first and second trials found him guilty, interpreting the body image as that of a person's body. But the Supreme Court did not agree and released him. If you film someone's body directly, you're guilty. But taking photos is not a crime.*

: If you're the judge?  
: Agree with the Supreme Court. Criminal acts are based on the principle of legitimacy.

Prof. Yang Jonghoon

Han Joon Hwi *We must avoid guesswork.*

DialogThe above is a discussion between Professor Yang Jong Hoon and Han Joon Hwi which shows that Han Joon Hwi is very good at bravely answering questions from Professor Yang Jong Hoon orally and clearly.

b. Has a warm and caring demeanor

The warm and caring attitude of Han Joon Hwi was seen in episode 10



**Figure 3. Screenshot of drama Law School eps.10 scene 00:10:52**

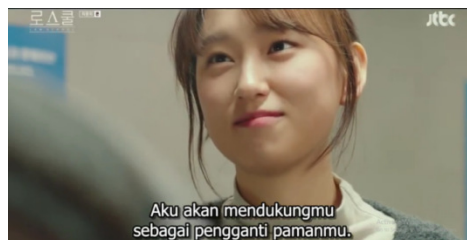
The picture above shows Han Joon Hwi trying to calm and comfort his friend, Jeon Ye Seul, who was forced to sue his girlfriend for alleged sexual harassment and rape.

### 3. Characteristics of Kang Sol A

Kang Sol A who played by actress Ryu Hye Young is a law student. Kang Sol A often feels inferior to her other friends because she comes from a poor family and has the lowest GPA in her class.

The reason Kang Sol A chose the Faculty of Law and wanted to become a lawyer was because Kang Sol A was once charged with violence when saving someone even though it was not her fault.

#### a. Attention



**Figure 4. Screenshot of drama Law School eps.16 scene 00:29:28**

From the picture above, you can see how Kang Sol A is trying to comfort Han Joon Hwi, who is reminded of his uncle. Kang Sol A said that he would support Han Joon Hwi in exchange for his deceased uncle, Seo Byung Joo.

#### b. Ambitious in learning

Even though Kang Sol A has a low GPA, her ambitious disposition in studying is extraordinary. This can be seen in episode 5



**Figure 5. Screenshot of drama Law School eps.5 scene 00:33:37**

FromThe picture above shows how Kang Sol A is very ambitious while studying. Kang Sol A learns about child support cases in divorced families that she has to handle alone. He studied the case for a full day until his nose started bleeding. Character Character

4. Professor Kim Eun Seok

Professor Kim Eun Seok, played by senior actress Lee Jung Eun, is a professor at the law school along with professor Yang Jong Hoon. Professor Kim Eun Seok is very good friends with Professor Yang Jong Hoon and becomes a colleague to reveal cases that occur..

a. Someone warm

Professor Kim Eun Seok's warm attitude was seen in episode 8:



**Figure 6. Screenshot of drama Law School eps.8 scene 00:50:48**

In the scene above, Professor Kim Eun Seok tries to calm Jeon Ye Seul, one of his students who is about to undergo trial. Jeon Ye Seul was involved in a violent case involving her boyfriend who is the son of assemblyman Ko Hyeong Soo.

b. Fun personality

Professor Kim Eun Seok is a lecturer who is very liked by his students. He is someone who is fun in class and really likes to help his students when they are in trouble. Even Professor Kim Eun Seok was able to memorize the names of his students completely. This attitude can be seen in episode 1



**Figure 7. Screenshot of drama Law School eps.8 scene 00:11:42**

5. The character of Seo Ji Ho

Seo Ji Ho, played by actor David Lee, is a law student who is very ambitious and determined to become a lawyer. In this drama, Seo Ji Ho tries to expose the spreader of fake news that made his father commit suicide. Seo Ji Ho wants to take revenge and punish the person who has spread the information.

6. The character of Kang Sol B

Kang Sol B whoplayed by actress Lee Soo Kyung, plays a cold and ambitious law student. Kang Sol B has always been restrained by his mother to get the best grades and become a judge to continue the lineage of his extended family. In this drama, Kang Sol B gets dragged into a dissertation plagiarism case. Kang Sol B is considered to have plagiarized Professor Seo Byung Joo's dissertation in a paper he contested when Kang Sol B was still in high school. In episode 5, Kang Sol B's character is seen as ignorant and indifferent.



**Figure 9. Screenshot of drama Law School eps.5 scene 00:28:04**

PictureThe above shows how Kang Sol B is ignorant and no longer cares about his mother because his mother often threatens him. Even though Kang Sol B is a cold and indifferent person, episode 15 shows another side of Kang Sol B



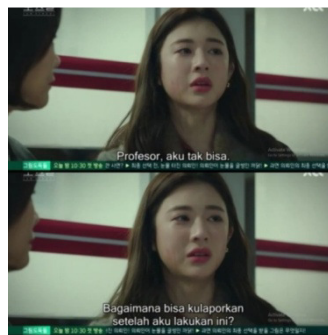


**Figure 10. Screenshot of drama Law School eps.15 scene 00:23:35**

In the cut scene above, it shows where Kang Sol B defends Kang Sol A because Kang Sol A is said to be a former prisoner. Kang Sol B and Kang Sol A have a very interesting relationship because their names are almost similar, only B and A are distinguished. The two of them were roommates in the law school dormitory.

#### 7. Jeon Ye Seul's Character

Jeon YeSeul, played by actress Go Yoon Jung, is a very beautiful law student. In this drama, Jeon Ye Seul is in a relationship with the son of board member Ko Hyeong Soo, which leads him to undergo trial for a case of violence involving his girlfriend. Jeon Ye Seul's character, who is humble and doesn't want to bother his friends, can be seen in episode 9



**Figure 11. Screenshot of drama Law School eps.15 scene 00:11:11**

In the scene above, Jeon Ye Seul chose to refuse to sue his girlfriend for what he had done. Jeon Ye Seul must become a suspect for the violence he committed. The violence he committed was unintentional. Jeon Ye Seul tries to protect herself because her boyfriend threatens to spread the video of the harassment he made to Jeon Ye Seul.

Professor Yang Jong Hoon, Professor Kim Eun Seok and their friends tried to convince Jeon Ye Seul to sue his girlfriend back so that Jeon Ye Seul would get leniency. Jeon Ye Seul actually has a lot of

evidence for cases of harassment and rape but she chose not to sue her boyfriend one of the reasons is because she still loves her boyfriend.

#### 8. The character of the character Ko Hyeong Soo

Ko Hyeong Soo Yangplayed by senior actor Jung Won Joong, is a member of the council who will run for president of South Korea.

In this drama, Ko Hyeong Soo becomes the center of several cases that occurred in the Law School drama, namely the murder case of Professor Seo Byung Joo and Lee Man Ho who became Ko Hyeong Soo's accomplice.

Ko Hyeong Soo's character in this drama is in episode 16



**Figure 4.12** screenshot of drama Law School eps.16 scene 00:37:58

Pictureabove shows how Ko Hyeong Soo's evil character is. The above cut is when Ko Hyeong Soo hears a voice recording of him talking to Kang Sol A's older brother, Kang Dan. Ko Hyeong Soo will do anything to cover up his crimes. The sentence “I will do worse if your sister is stubborn” means that if Kang Sol A and her friends still want to harass Ko Hyeong Soo, it means that she will carry out the plans of crimes she has already committed, including murder.

#### **B. The implication in Literature Learning**

Inin the 2013 curriculum education in Indonesia places more emphasis on student character education. In the 2013 curriculum the subject of Indonesian in class XI in KD 4.18 "Shows one of the characters in a drama that is read or watched orally" with the aim that students can play one of the characters in the drama that is read or watched in accordance with the character's character.

Through this research, teachers and students are able to see that drama is not only entertainment but also as a lesson, and drama is also not an educational literary work. In teaching and learning activities at school, by involving students who have a variety of different characters, then through the character of

the drama character Law School must pay attention to how the character must be shown and be able to treat students who have an interest or not in the field of literature in learning Indonesian.

Results This research is also in line with research conducted by Enjelin Yermias, Kamajaya Al Katuuk and Selfvi Torar which discusses the Character Analysis of the Main Figures in Lina Ramda's *Loved You Before Novel* and Its Implications in Learning Literature in Schools with the results of the study that the main character's character faces opposition and anxiety. The main character also has a sociable, polite, imaginative and calm character.

## **CONCLUSION**

The results of the study show that there are 7 characters from the characters in the Law School drama, namely,

1. Firmly owned by Professor Yang Jong Hoon
2. The kind and considerate character of Professor Yang Jong Hoon, Professor Kim Eun Seok, Han Joon Hwi, Kang Sol A, Kang Sol B, and Jeon Ye Seul.
3. Someone who is smart is owned by Han Joon Hwi, Kang Sol B and Seo Ji Ho
4. The character of an ambitious person shared by Kang Sol A and Seo Ji Ho
5. The character of someone who has a pleasant personality is owned by Professor Kim Eun Seok
6. Kang Sol B who has an ignorant character and lastly Ko Hyeong Soo who has an evil character.

Drama Law School also provides an overview of the various characters possessed by the characters, with the aim that the characters possessed by the characters can be implicated in learning literature at school based on the 2013 curriculum, the subject of Indonesian in class XI in KD 4.18 "Showing one of the characters in the drama read or watched orally" with the aim that students can play one of the characters in the drama that is read or watched in accordance with the character of the character.

## **REFERENCES**

Alwisol. 2004. *Personality Psychology*. Malang: UMM Press.

Bakir, Suyoto. 2006. *Complete Indonesian Dictionary*. Batam: Karisma Publishing Group

Echols, John M and Shadily hasan. 2007. *English-Indonesian dictionary*. 29th Printing Jakarta: PT Gramedia.

Keraf, Gorys. 1984. *Diction and Language Style*. Jakarta: Gramedia Pustaka Utama

Sugiyono. 2017. *Quantitative, Qualitative and R&D Research Methods*. Bandung: Alfabeta.

Dude, Burhan. 2011. *Qualitative Research Methodology*. Jakarta: King of Grafi